

# SHARP

**MX-3610N**

Digital Full Colour Multifunctional System



print | copy | scan | fax | file

## **A smarter way of working**

An advanced MFP with  
finger-swipe touch control for  
maximum efficiency



# This is the future, today

Finger-swipe touch control technology has transformed how we interact with smart phones and tablet PCs. Now it's doing the same for office multifunction systems. With the MX-3610N you just touch the control panel and tap, flick or slide your finger for effortless control of every document, function and setting.

## Power, versatility and convenience

One of the world's most advanced MFPs, the MX-3610N lets you take advantage of the latest working practices.

You can add full internet access, for example, so you can search and print web content without returning to your desk. And that's not all. You can even use the Sharp OSA® option to connect to the 'Cloud' and run cost-efficient Software as a Service (SaaS) applications from Sharp's Technology Partners.

This is design at its best. The paper drawers have easy-grip handles for comfort and safety. If you need help, simply touch the control panel to bring up the on-screen user guide and get the answer you need in moments. And your IT staff can perform configuration, troubleshooting and ad hoc training from across the network, thanks to a handy Remote Access Control facility.

## First choice for busy offices

The MX-3610N really delivers. It can print and copy at speeds of up to 36 pages per minute (even in full colour) and it comes with two-sided printing, copying, scanning and robust security as part of the package: remarkable specifications for one of the smallest MFPs in its class.

It's highly configurable, too. Options include more paper drawers, fax capability, extra security and various third party applications for streamlining everyday office tasks. Plus, you can specify a space-saving inner finisher with electronic sorting and offset stacking, and a saddle-stitch finisher for producing stylish, professional-looking documents.

## Energy-saving technology

The Energy Star-certified MX-3610N has one of the lowest typical electrical consumption ratings in its class, helping to support your environmental objectives while reducing your energy bill. An efficient LED scanner, special Eco Scan Mode, rapid warm up time and both self-adjusting and pre-set auto shut down capabilities make this one of our greenest MFPs ever.



Finger-swipe touch control for intuitive operation of every function



# Product highlights



Low-energy LED lights



Easy-grip drawer handles



Tilttable panel with retractable keyboard option



Space-saving inner finisher option







# A revolution in office productivity

The first thing you'll notice about your new MX-3610N is how easy it is to use. The 10.1" LCD control screen has the space for less clutter and larger, clearer text, and it can be tilted up or down for easy viewing, even from a wheelchair.

Scan your originals - the 100-sheet document feeder makes double-sided scanning quick and easy - and use finger-swipe technology for total control of your digital documents. Preview pages in various modes - 1-Page, 3D or thumbnail - then simply touch and slide to rotate them, change their order, add or delete pages, and then print, file or distribute just as you need.

It's all customisable, too. Everyone in your team can have a personalised home screen for faster access to the tools and applications they use most often, set against a choice of 7 background styles.



Tilting finger-swipe control panel\* for easy page previews and editing

## The heart of a digital office

The MX-3610N can do so much more than the limited printing, copying and scanning of ordinary office machines. Add Sharp OSA® (Open Systems Architecture), for example, and you can turn your MFP into a gateway to applications on your network.

There's even an optional Web Browsing Kit which gives you full internet access. So there's no need to return to your desk - simply access the tools and information you need directly from the finger-swipe control interface. But that's not all.

The latest version of Sharp OSA\*\* can reach beyond your firewall, letting you leverage the efficiency of Cloud computing services which are rapidly gaining popularity for their proven functionality and low cost-per-user for little or no up-front investment. That means you can access a range of 'Software as a Service' (SaaS) applications, developed by Sharp's technology partners.



# Total efficiency

The finger-swipe control interface makes it easy for everyone in the office to make full use of the MX-3610N's power and versatility.

Print runs of all sizes, from just a few pages to several thousand, can be performed in colour or black and white at the full rated speeds. For truly outstanding performance, you can link two MFPs of the same model to share a print job between them, effectively doubling the output speed.

## Maximum performance

Copying is just as quick as printing. Even when you want to copy just a page or two. You can directly print PDF\*, TIFF and JPEG files without using the print driver.

For longer or more complex runs, you can scan single-sided originals at the rate of 50 per minute, or double-sided as fast as 20 per minute. Plus, there's a Job Build function which lets you scan large-volume jobs in easily manageable batches, which are combined for eventual output as a single job.

\* PDF direct printing requires optional MX-PK11 PS3 Expansion Kit.



Two convenient USB ports are provided for 'walk-up printing' with a memory stick.

# Stylish, professional documents

From fully-finished customer-facing proposals to internal presentations and briefing documents, the MX-3610N lends style and professionalism to everything your team produces.



Stylish, high-quality documents

Specially formulated developer and toner with Resolution Enhancement Technology produce true 1200 x 1200 dpi print resolution and the equivalent of 9600 x 600 dpi interpolated print and copy resolution.

Add the space-saving inner finisher, or saddle-stitch finisher and hole punch module, plus fax if you need it, increase the paper supply up to 5,600 sheets and you can create a custom-configured MFP that's capable of meeting your team's toughest demands.

All of your documents, every day, for any purpose. The new MX-3610N with finger-swipe control technology takes care of them all.

# The world at your fingertips

While there'll always be a place for hard copy documents, the powerful scanning capabilities of this new MFP make it easy for everyone to capture, create, store and share information in digital form. And that opens entirely new opportunities for efficiency, creativity and productivity.

Now you can scan in full colour directly to email, your desktop, FTP servers, network folders and USB memory sticks in a wide range of popular formats including TIFF, PDF, Encrypted PDF, PDF/A and Compact PDF\*, JPEG and XPS.

To distribute your scans, simply use the finger-swipe control interface to browse and select email contacts. Getting your own copy is even easier: a handy 'Scan to Me' function automatically emails the file to your inbox with a single touch.

And with the documents on your PC, you can use Sharpdesk document management software, which lets you store and manage files of virtually any format, and even combine them into new multipage documents.

\* Requires optional MX-EB11 Enhanced Compression Kit.

## Dependable performance

Scanning is first class. A resolution that's adjustable to 150 dpi lets you create smaller files without compromising clarity and, for 'difficult' documents, you can compensate by adjusting contrast and sharpness.

Sharp's OSA Network Scanning Tool Option provides one touch scanning to your PC or network drive. Scanned documents can quickly be printed, filed, previewed, shared, and stored, saving time and improving workflows.

Even high volume scanning is effortless thanks to thoughtful innovations that automatically stamp originals as they're scanned and skip blank pages entirely.

## Efficient filing

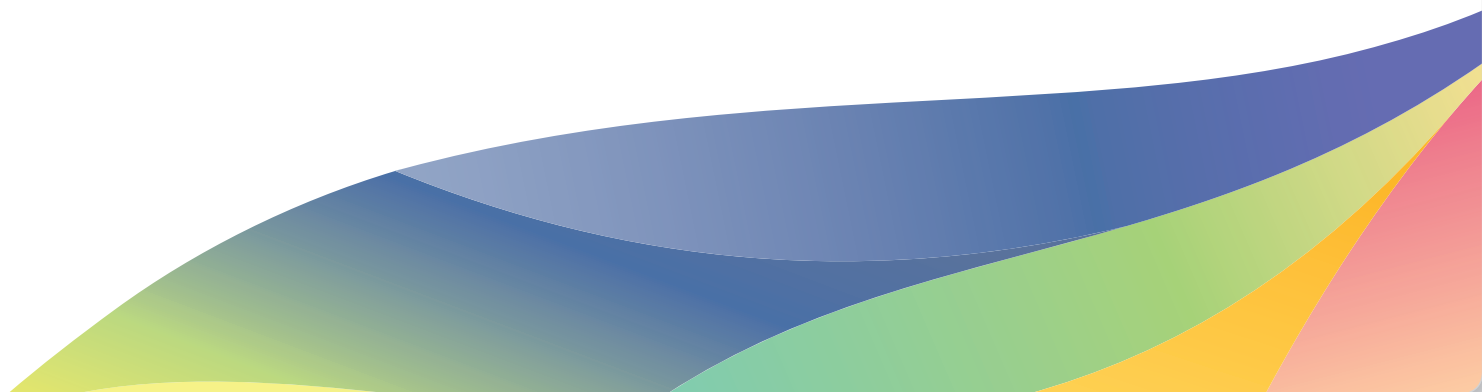
The MX-3610N comes with a 160GB hard drive on which you can store jobs (neatly indexed with thumbnail views) for later reuse. Save jobs in PDF format, allowing you to browse them from your PC. Choose from Quick Filing for temporary storage, Advanced Filing for long-term archiving, or a Main Folder for convenient workgroup sharing.

And the optional Mirroring Kit\* provides a backup for the data stored on the hard drive.

\* Requires optional MX-EB12.



Store and retrieve documents with thumbnail views



# Industry-leading security

Sharp MFPs incorporate some of the industry's toughest, multi-level security measures as standard. We start with password-controlled access for routine user authentication, and you can add a third party card reader for tighter control. But then we go further with secure network interfaces to defeat external threats, SSL and IPsec to encrypt and protect network traffic, and full IEEE 802.1X compliance for port-based network access control.



Multi-level security to protect your information, documents and network

And because we know that sensitive documents are sometimes accessed unintentionally we guard against accidents, too.

A Hidden Pattern Print feature can reveal a watermark (e.g. 'CONFIDENTIAL: NOT FOR COPY') - if original is mistakenly copied, alerting the user so that the copy should not be distributed, and Confidential PIN Printing requires the user to be present at the MFP before the print run can start. Plus, you protect against the unauthorised viewing of confidential documents by using password-protected PDFs.

When it's time to replace your MFP Sharp's security features continue to protect your interests by making it easy to completely and permanently remove all data from the device.

For even greater security, choose the optional Data Security Kit\*, which has a Document Control facility to prevent unauthorised copying, scanning, faxing and filing, plus the ability to encrypt and securely erase data from the hard disk and internal memory, at specified intervals or on demand.

\* Requires optional MX-FR30U





# Easy support for maximum uptime

The advanced finger-swipe interface will help even inexperienced users benefit from the MX-3610N's full range of capabilities. Not only is the User Guide accessible in digital form direct from the control screen, but we've also maximised uptime with important support tools such as:

## Web Page Management

Every important setting can be managed through a standard web browser, including user access, security and other controls and configurations.

## Sharp Remote Device Manager

Installed on your file server, Sharp Remote Device Manager gives you centralised, real-time control of your networked printers and MFPs without leaving your desk. Error-reporting, technical support, driver installation, firmware upgrades, printer configuration: everything is easier and more accessible.

## Remote Diagnosis

Solve issues before they become problems by monitoring your MFPs via your web browser, and receive timely email alerts when maintenance is required.

## Printer Status Monitor

Check the MFP's operating status from your PC before you start a job, to be sure there's sufficient toner and paper. As soon as your documents are ready an alert will appear on your desktop. It's easy.

## Job Status Screen

A glance at the control panel's Job Status Screen will show you every copy and print job and their current position in the queue.

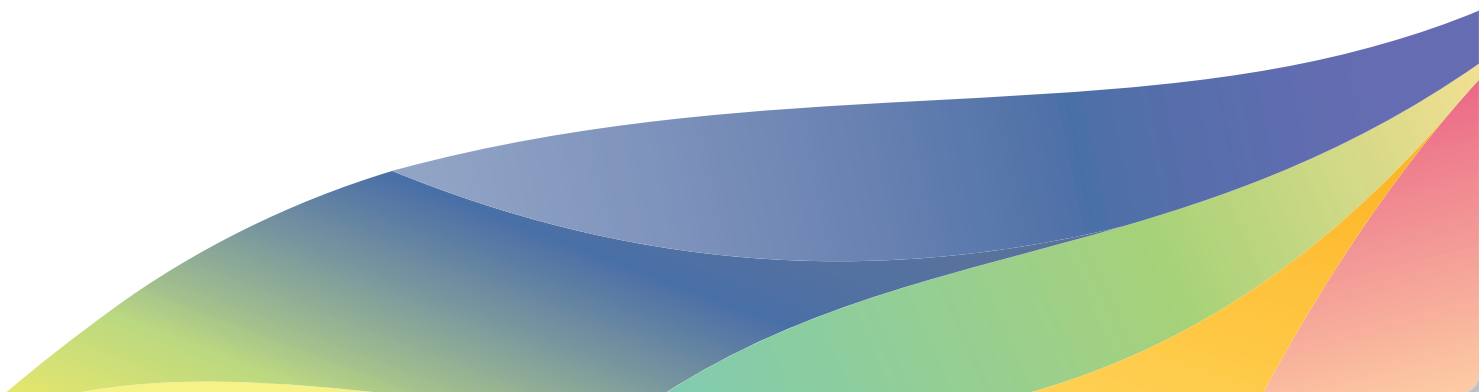
## Remote Access Interface

Lets you recreate the MFP's main control panel on your PC screen\*, giving you the ability to operate every major function direct from your desktop.

\* Requires VNC application

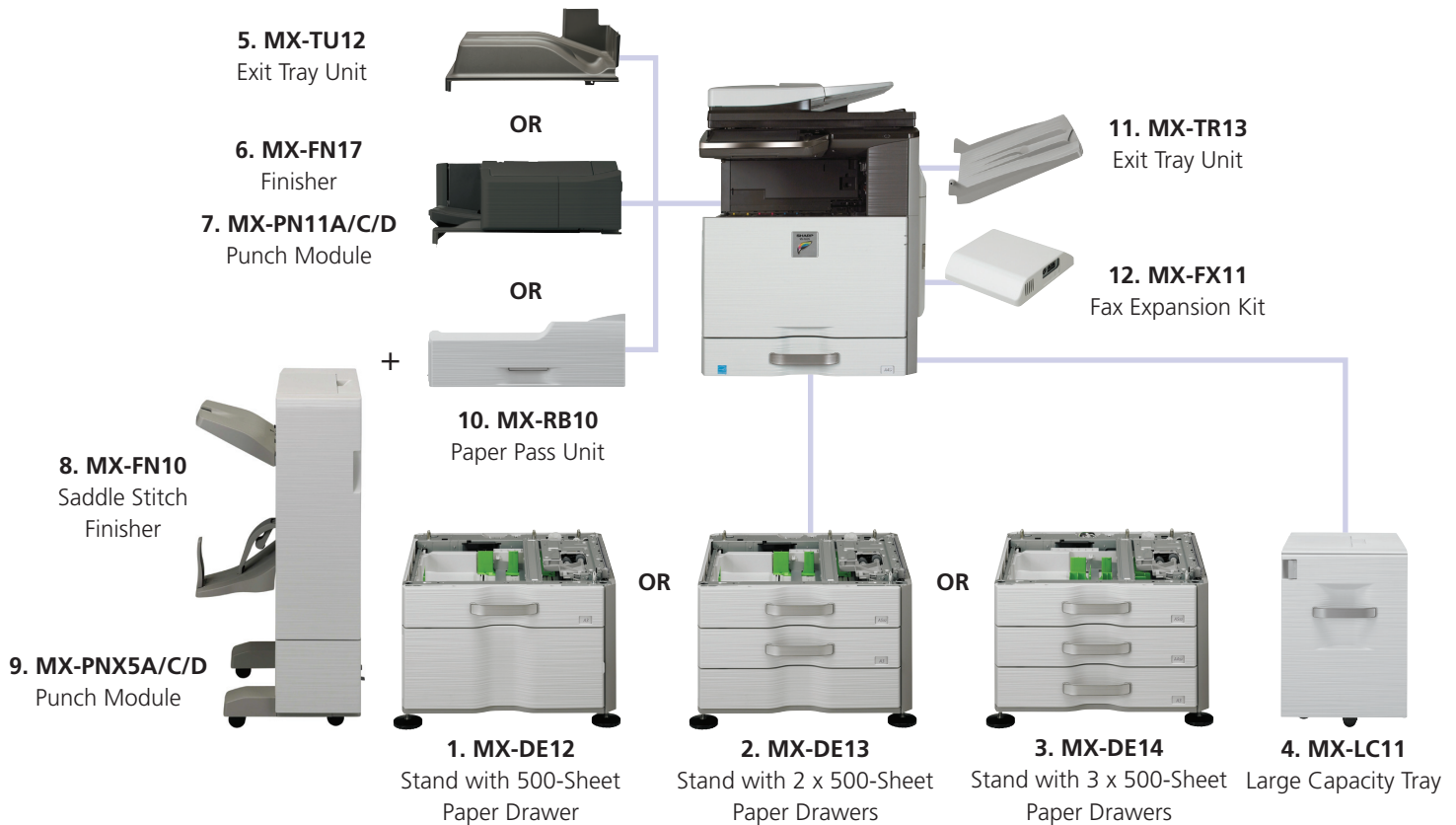


Access User Manual directly from MFP panel



# Options

No two workgroups are exactly alike and everyone has different needs. Choose from these options to configure an MFP that's perfect for your business.



## Configuration examples



Base Unit  
Exit Tray Unit  
Stand with 500-Sheet Paper Drawer



Base Unit  
Finisher  
Exit Tray  
Stand with 3 x 500-Sheet Paper Drawers



Base Unit  
Stand with 3 x 500-Sheet Paper Drawers  
Saddle Stitch Finisher + Paper Pass Unit  
Exit Tray  
Large Capacity Tray



## Base Unit

### MX-KB11 Keyboard

1. **MX-DE12 Stand with 500-Sheet Paper Drawer**  
A3 to A5R, 500 sheets (80 g/m<sup>2</sup>)
2. **MX-DE13 Stand with 2 x 500-Sheet Paper Drawers**  
A3 to A5R, 500 sheets each (80 g/m<sup>2</sup>) for lower and upper trays
3. **MX-DE14 Stand with 3 x 500-Sheet Paper Drawers**  
A3 to A5R, 500 sheets each (80 g/m<sup>2</sup>) for lower and upper trays
4. **MX-LC11 Large Capacity Tray**  
A4 to B5, 3,500 sheets (80g/m<sup>2</sup>)

## Finishing

5. **MX-TU12 Exit Tray Cabinet Unit**
6. **MX-FN17 Finisher**  
A3 to B5 (offset/staple),  
A3W to A5R (non offset)  
Offset tray (upper): max. 500-sheet paper capacity\*<sup>1</sup>  
Stapling capacity: max. 50-sheet multi-position staple\*<sup>1</sup>  
Staple position: 3 locations (front, rear or 2 point stitching)
7. **Optional Punch Module for MX-FN17:**  
**MX-PN11A - 2 Hole Punch Module**  
**MX-PN11C - 4 Hole Punch Module**  
**MX-PN11D - 4 Hole Wide Punch Module**
8. **MX-FN10 Saddle Stitch Finisher (1,000-Sheet)**  
A3 to B5 (offset/staple), A3W to A5R (non offset)  
Offset tray (upper): max. 1,000-sheet paper capacity\*<sup>1</sup>  
Stapling capacity: max. 50-sheet multi-position staple\*<sup>1</sup>  
Staple position: 3 locations (front, rear or 2 point stitching)\*<sup>1</sup>  
Saddle stitch tray (lower): 10 sets (11-15 sheets), 15 sets (6-10 sheets),  
20 sets (1-5 sheets). 15 sheets max per set
9. **Optional Punch Module for MX-FN10**  
**MX-PNX5A - 2 Hole Punch Module**  
**MX-PNX5C - 4 Hole Punch Module**  
**MX-PNX5D - 4 Hole Wide Punch Module**
10. **MX-RB10 Paper Pass Unit**  
required when using MX-FN10
11. **MX-TR13 Exit Tray Unit**

## Faxing

12. **MX-FX11 Fax Expansion Kit**  
Super G3 fax module

**MX-FWX1 Internet Fax Expansion Kit**

## Connectivity

### Printing

**MX-PK11 PS3 Expansion Kit**  
Enables PostScript printing

**MX-PUX1 XPS Expansion Kit**  
(MX-SM10 required)

**MX-SM10 Expansion Memory Board**

**MX-PF10 Barcode Font Kit**

**MX-AM10 Web Browsing Expansion Kit**  
Enables browsing of Internet from MFP panel

### Scanning

**AR-SU1 Stamp Unit**  
Marks already scanned documents for checking

**MX-EB11 Enhanced Compression Kit**  
Enables creation of high compression PDFs

### Sharpdesk Licenses

**MX-USX1/X5/10/50/A0**  
1/5/10/50/100-License Kit

### Sharp OSA®

**MX-AMX1 Application Integration Module**  
**MX-AMX2 Application Communication Module**  
**MX-AMX3 External Account Module**

### Sharp OSA Network Scanner Tool Licenses

**MX-UN01A/05A/10A/50A/1HA**  
1/5/10/50/100-License Kit  
(MX-AMX2 required)

## Security

**MX-FR30U Data Security Kit**  
Commercial Version  
(Common Criteria validated version will also be available)

**MX-EB12 Mirroring Kit**  
Second hard drive enabling data backup of files stored on HDD

\*<sup>1</sup> A4 or smaller, 80g/m<sup>2</sup>  
Some options may not be available in some areas

# Specifications

## MX-3610N

Digital Full Colour Multifunctional System



General		
Engine speed ppm/cpm	A4	A3
Colour	36	17
B/W	36	17
Paper size	Max. A3 wide, min. A5R	
Paper weight	Drawer: 60g/m <sup>2</sup> - 209g/m <sup>2</sup> Bypass: 55g/m <sup>2</sup> - 256g/m <sup>2</sup>	
Paper capacity	Standard: 600 sheets (500-sheet tray and 100-sheet multi-bypass tray), Maximum: 5,600 sheets (4 x 500-sheet trays, 100-sheet multi-bypass tray and 3,500-sheet large capacity tray)	
Warm-up time*1	20 sec.	
Memory	Standard: Copier/Printer (shared): 3 GB Option: Printer: 1 GB HDD 160 GB*2	
Power requirements	Rated local AC voltage $\pm 10\%$ , 50/60 Hz	
Power consumption (Max.)	1.84 kW (200 to 240V)	
Dimensions (W x D x H)	608 x 680 x 834 mm	
Weight	77 kg	

Copier		
Original paper size	Max. A3	
First copy time*3	Full colour	B/W
	6.8 sec	5.2 sec
Continuous copy	Max. 999 copies	
Resolution (Max.)	Scan (colour): 600 x 600 dpi Scan (b/w): 600 x 600 dpi, 600 x 400 dpi, 600 x 300 dpi Print: 600 x 600 dpi, 9600*4 equivalent x 600 dpi	
Gradation	Equivalent to 256 levels	
Zoom range	25 to 400% (25 to 200% using RSPF) in 1% increments	
Preset copy ratios	10 ratios (SR/SE)	

Colour Network Scanner	
Scan method	Push scan (via operation panel), Pull scan (with TWAIN-supporting application)
Resolution	Push scan: 100, 150, 200, 300, 400, 600 dpi Pull scan: 75, 100, 150, 200, 300, 400, 600 dpi, 50 to 9600*4 dpi custom
File formats	XPS*5, PDF, Encrypted PDF, JPEG, TIFF, Compact PDF*6, PDF/A
Scanner utilities	Network Scanner Tool, Sharpdesk™
Scan destinations	Scan to e-mail, desktop, FTP server, network folder (SMB), USB memory



Document Filing	
Document filing capacity	Main and custom folders: 71 GB, 20,000 pages*7 or 3,000 files Quick file folder: 10 GB, 10,000 pages*7 or 1,000 files
Stored jobs	Copy, print, direct print, scan, fax transmission*8
Storage folders	Quick folder, main folder, custom folder (max. 1000 folders)
Confidential storage	Password protection

Network Printer	
Resolution	1200 x 1200 dpi, 600 x 600 dpi, 9,600 (equivalent)*4 x 600 dpi
Interface	USB 2.0 10Base-T/100Base-TX/1000Base-T
Supported OS*9	Standard: Windows® 2000/XP, Windows® Server 2003/2008/2008R2, Windows® Vista, Windows® 7 Optional: Mac OS 9.0 - 9.2.2, Mac OS X 10.2.8, 10.3.9, 10.4.11, 10.5 - 10.5.8, 10.6 - 10.6.5
Network protocols*9	TCP/IP (IPv4 & IPv6), IPX/SPX (Netware), NetBEUI, EtherTalk (AppleTalk)
Printing protocols	LPR, Raw TCP (port 9100), POP3 (e-mail printing), HTTP, Novell Printserver application with NDS and Bindery, FTP for downloading print files, EtherTalk printing, IPP
PDL emulation	Standard: PCL 6 Option*10: PS3 emulation, XPS
Available fonts	80 fonts for PCL, 136 fonts for PS3 emulation*9

B/W Facsimile (optional MX-FX11 required)	
Compression method	MH/MR/MMR/JBIG
Communication protocol	Super G3/G3
Transmission time	Less than 2 seconds*11
Modem speed	33,600 bps to 2,400 bps with automatic fallback
Transmission resolution	Standard: 203.2 x 97.8 dpi, Ultra Fine: 406.4 x 391 dpi
Recording width	A3 to A5
Memory	1GB
Grey scale levels	Equivalent to 256 levels

- \*1: At rated voltage. May vary depending on machine conditions and operating environment.  
 \*2: 1GB = One billion bytes when referring to hard drive capacity. Actual formatted capacity is less.  
 \*3: Best achieved time based on A4 copy, long-edge feeding from 1st paper drawer, using document glass, when machine is ready, without Auto Colour Mode and Auto Colour Selection. May vary depending on machine conditions and operating environment.  
 \*4: Resolutions higher than 600 dpi are interpolated.  
 \*5: To view XPS files on PCs not running Windows Vista, you must have the XPS View application installed.  
 \*6: Requires optional MX-EB11.  
 \*7: Measured using Sharp's standard chart (A4 with 6% coverage B/W)  
 \*8: The Quick File Folder shares memory with the Job Build function; up to 10 GB of data storage is available when using both functions. The storage capacity will be less for colour pages.  
 \*9: Optional MX-FX11 required.  
 \*10: Optional MX-PK11 required for Mac OS, EtherTalk and PS3.  
 \*11: PS3 requires optional MX-PK11. XPS requires optional MX-PUX1 and MX-SM10.  
 \*11: Based on Sharp's standard chart with approx. 700 characters (A4 portrait) at standard resolution in Super G3 mode, 33,600 bps, JBIG compression.



SAP® Printer Vendor Solution



# SHARP

Design and specifications are subject to change without prior notice. All information was correct at time of print. The ENERGY STAR logo is a certification mark and may only be used to certify specific products that have been determined to meet the ENERGY STAR programme requirements. ENERGY STAR is a US registered mark. The ENERGY STAR guidelines apply to products only in the US, Europe, Australia, New Zealand and Japan. Windows, Windows XP and Windows Vista are registered trademarks of Microsoft Corporation. SAP and all SAP logos are trademarks or registered trademarks of SAP AG in Germany and in several other countries. All other company names, product names and logotypes are trademarks or registered trademarks of their respective owners. ©Sharp Corporation May 2011 Ref: MX-3610N. All trademarks acknowledged. E&OE.